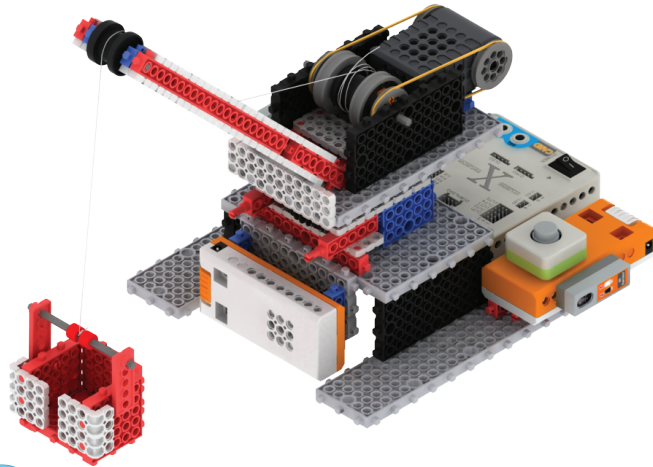




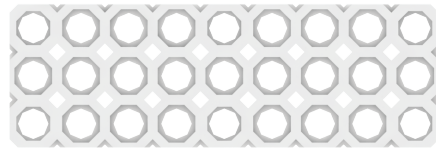
## 30 Grúa



## Piezas



Bloque N 3x11 (2)



Bloque N 3x9 (2)



Bloque N 2x13 (4)



Bloque N 2x7 (2)



Bloque N 2x11 (4)



Bloque N 2x9 (2)



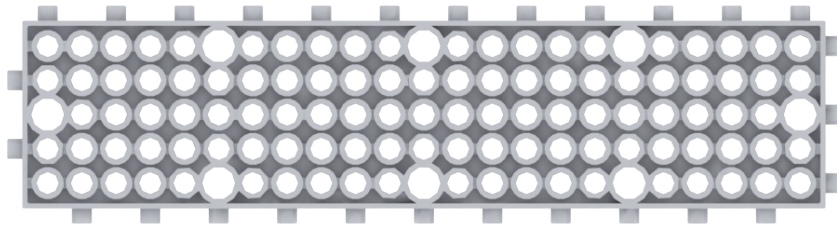
Bloque N 3x7 (2)



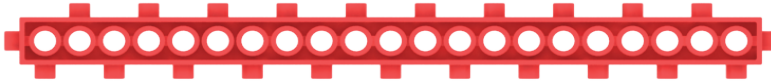
Remache doble (2)



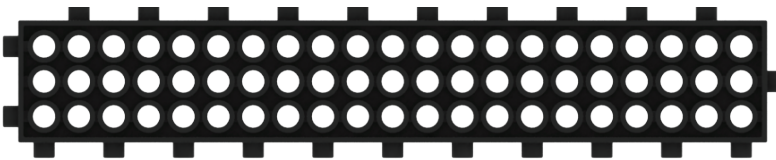
Rueda polea (2)



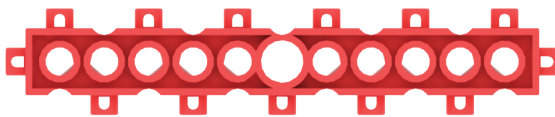
Bloque 5x23 (2)



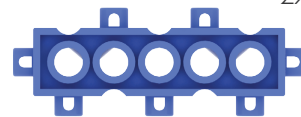
Bloque 1x21 (2)



Bloque 3x21 (1)



Bloque 1x11 (3)



Bloque 1x5 (6)



L-shaft

Eje L (3)



M-shaft

Eje M (2)



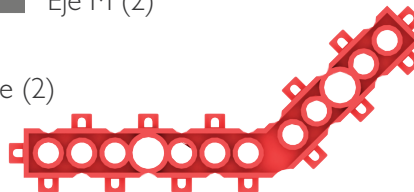
Conector de eje (2)



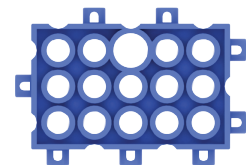
Arandela (2)



Goma de eje roja (7)



Bloque 135 ° (2)



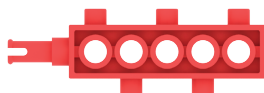
Bloque 3x5 (2)



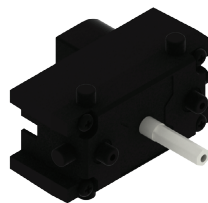
Goma (2)



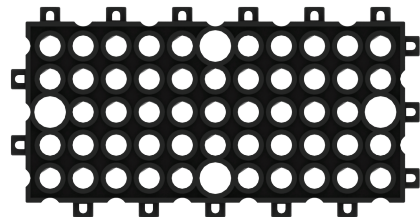
Bloque de unión 2 (2)



Bloque con eje (4)



Motor 2 (1)



Bloque 5x11 (5)



Engranaje básico (1)



Adaptador L 2x4 (4)



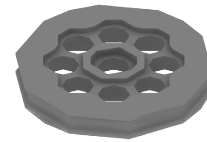
Engranaje L (2)



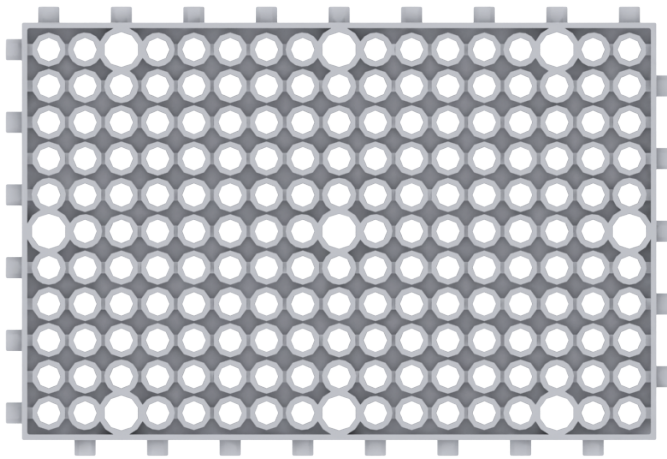
Engranaje M (1)



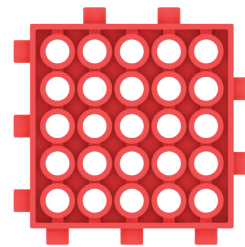
Engranaje S (2)



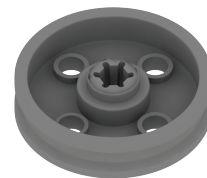
Llanta (2)



Bloque 11x17 (2)



Bloque 5x5 (4)



Llanta de rueda delgada (2)



Sensor de infrarrojos (2)



Sensor pulsador (2)



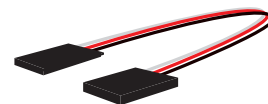
Manivela (2)



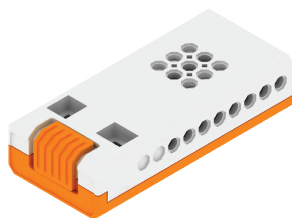
Motor 1 (1)



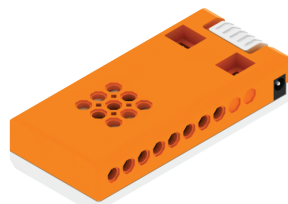
Cable de conexión (3)



Alargador de cable (2)



Portapilas o portabaterías 1 (1)

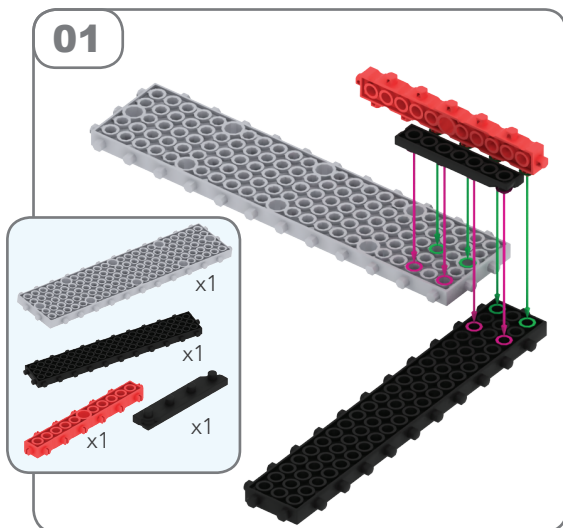


Portapilas o portabaterías 2 (2)

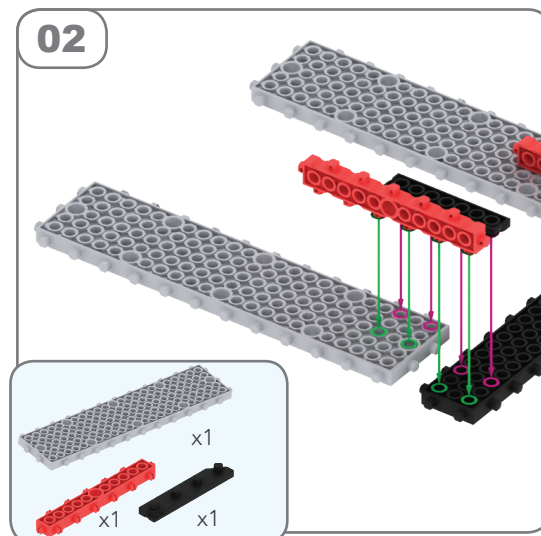


Placa base MRT-Card (1)

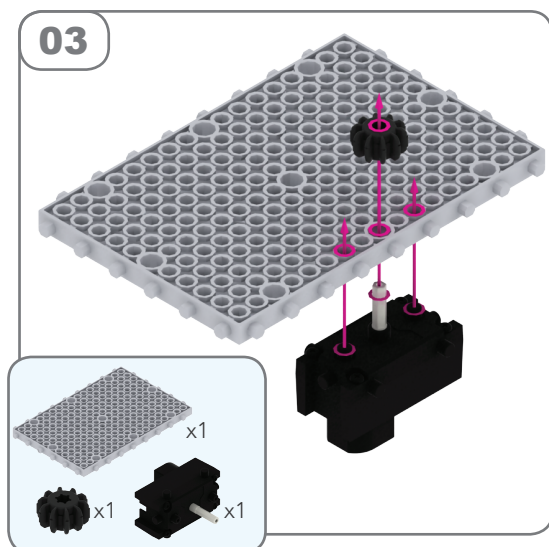
01



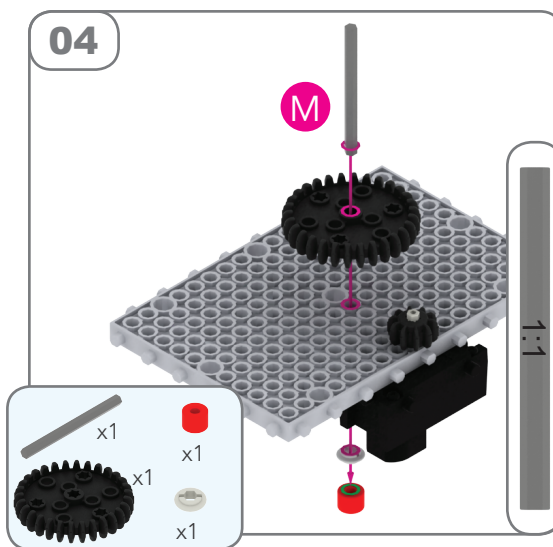
02



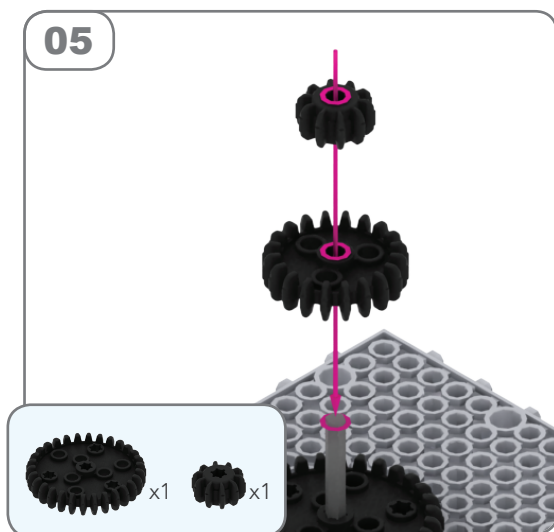
03



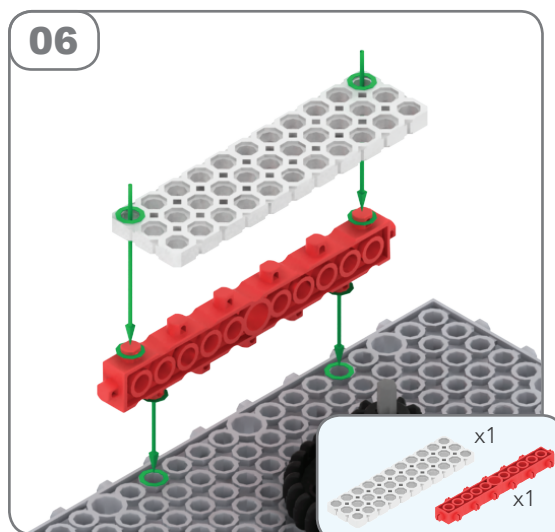
04



05

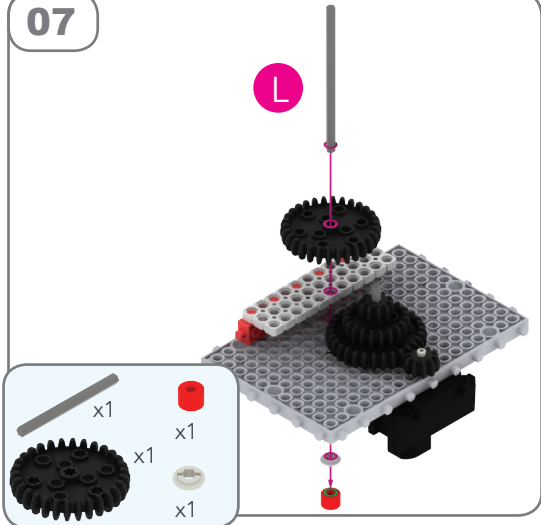


06



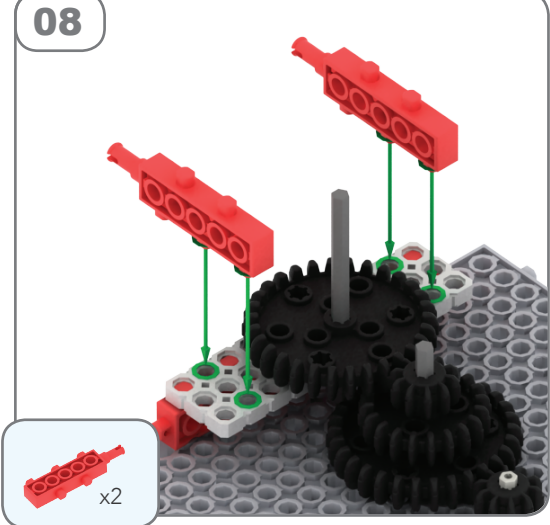
1:1

07



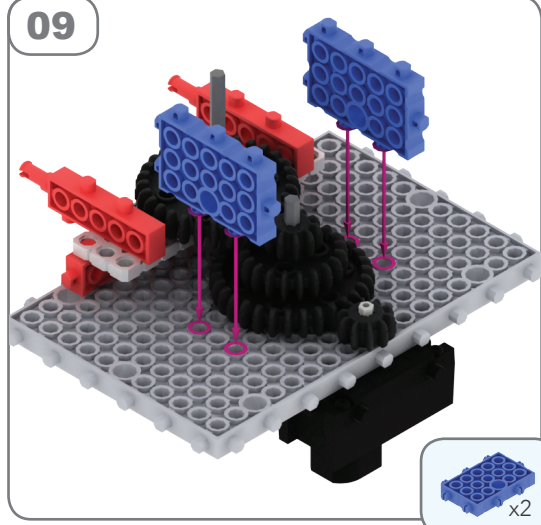
Legend:  
 Grey axle x1  
 Red pin x1  
 Black gear x1  
 White bush x1

08



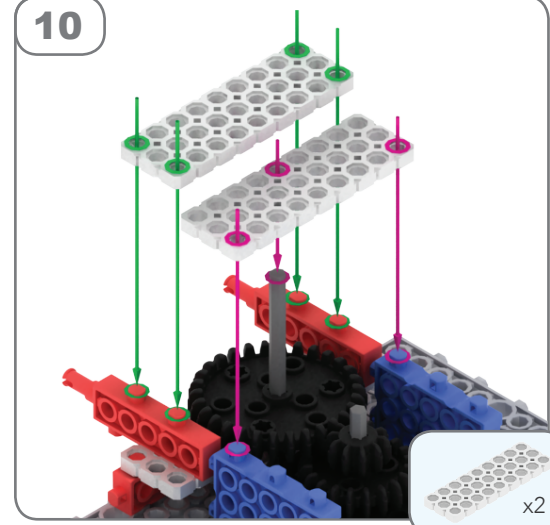
Legend:  
 Red 1x5 Technic Technic beam x2

09



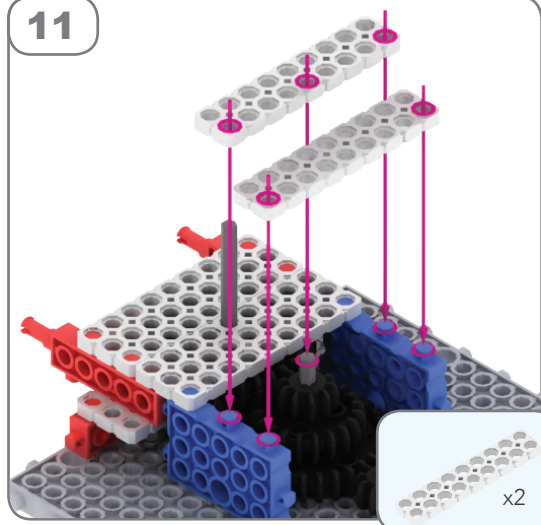
Legend:  
 Blue 1x5 Technic Technic beam x2

10



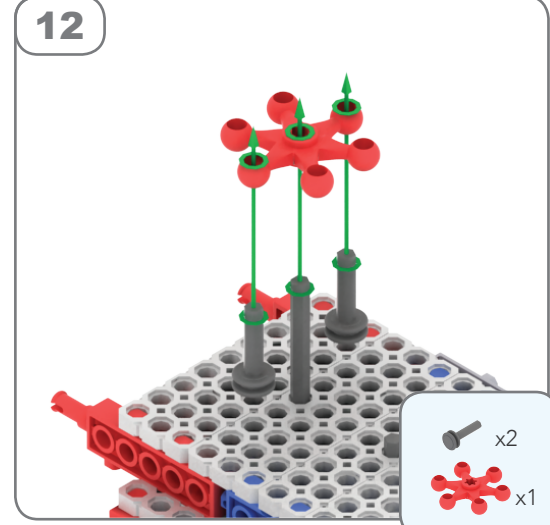
Legend:  
 White 1x5 Technic Technic beam x2

11



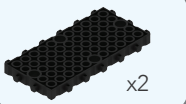
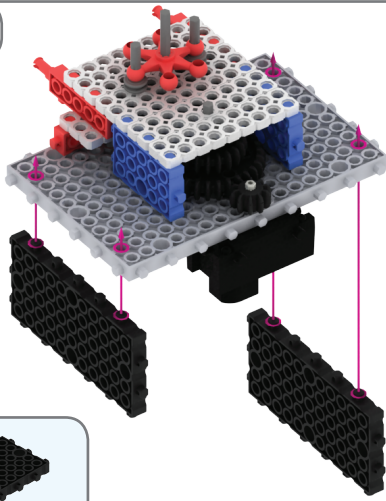
Legend:  
 White 1x5 Technic Technic beam x2

12

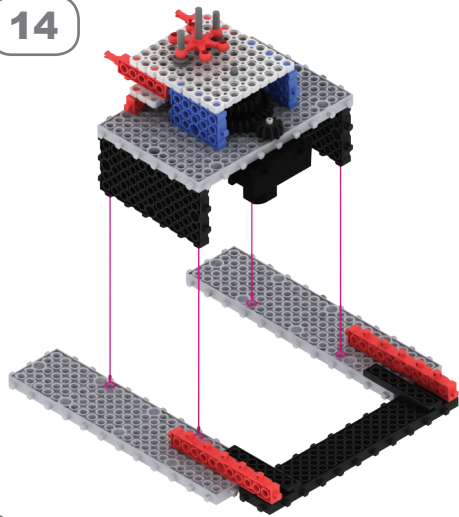


Legend:  
 Grey pin x2  
 Red 3-way connector x1

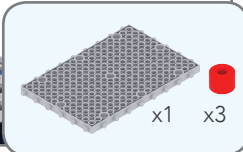
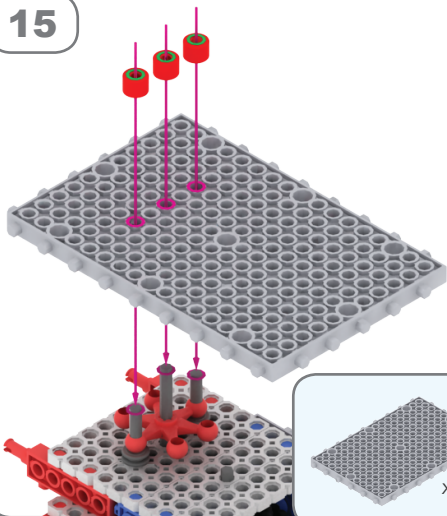
13



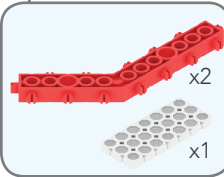
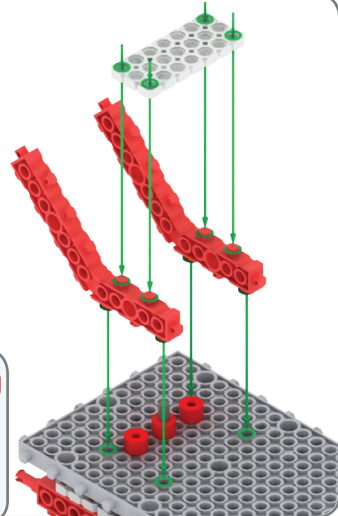
14



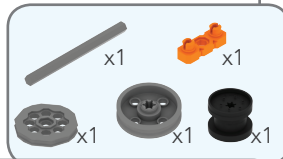
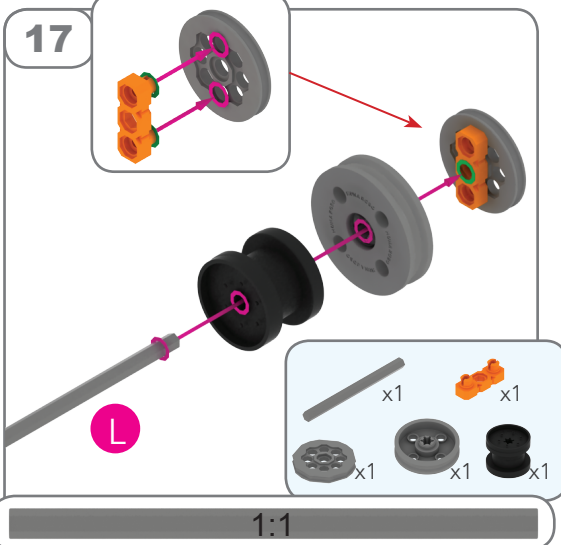
15



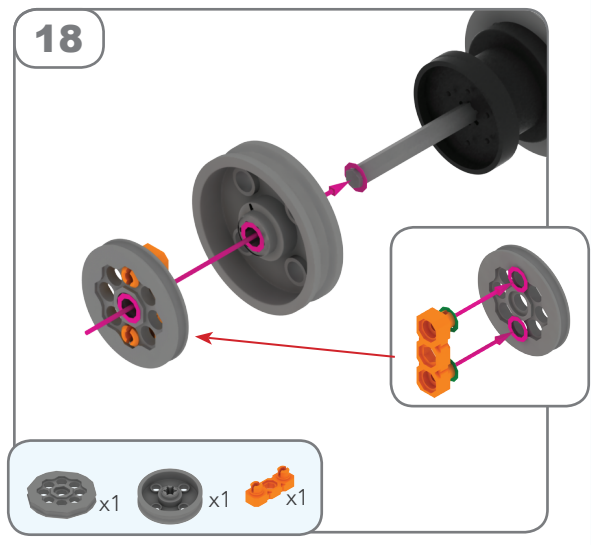
16



17

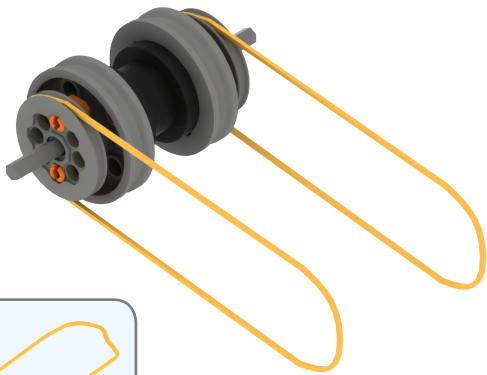


18



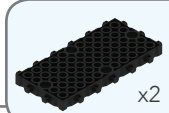
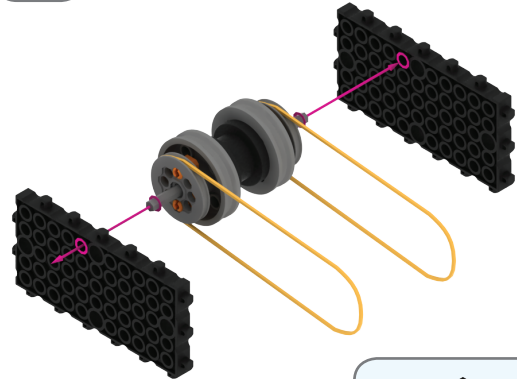
19

Fijar las gomas elásticas a las llantas/Hub1



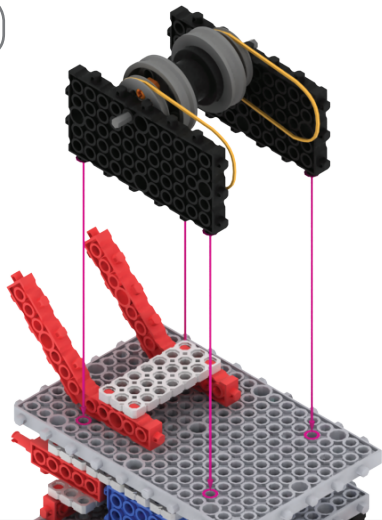
x2

20

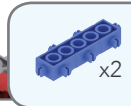
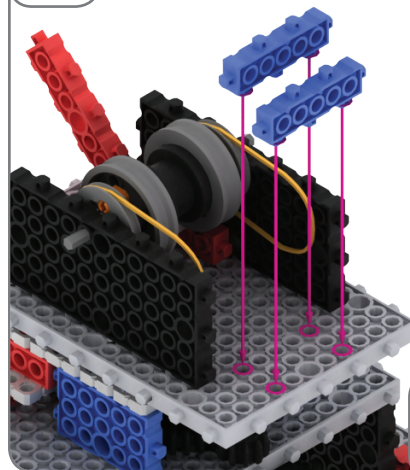


x2

21

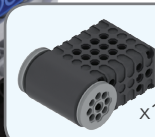
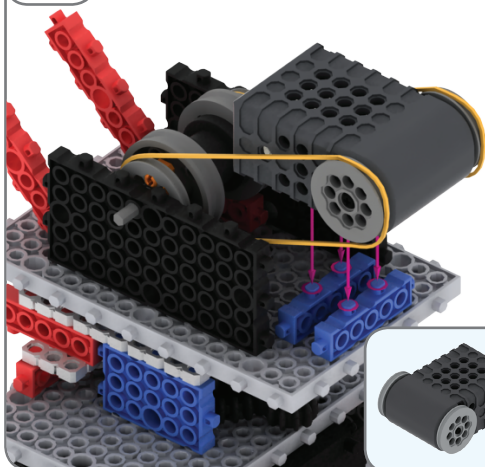


22



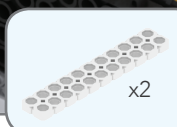
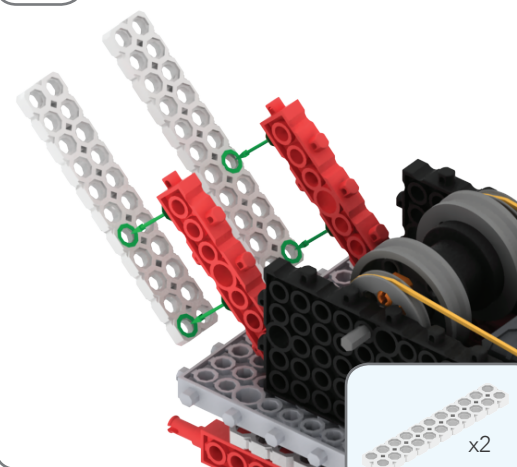
x2

23



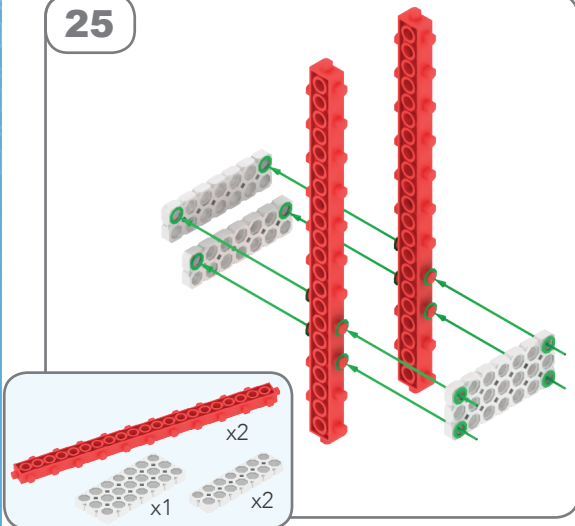
x1

24

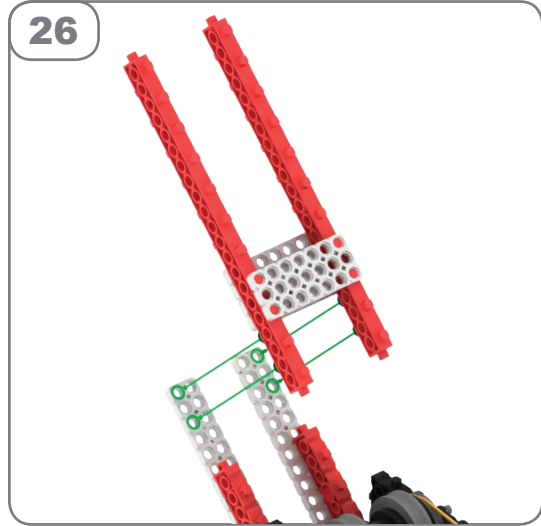


x2

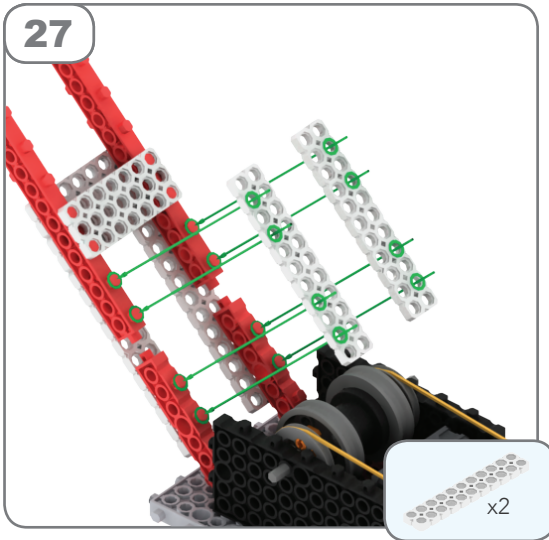
25



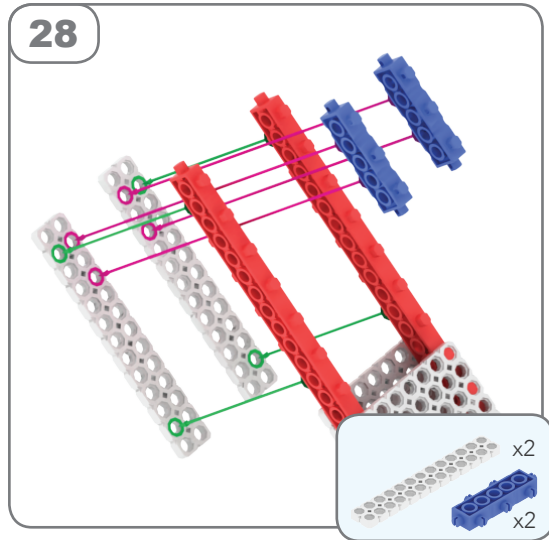
26



27

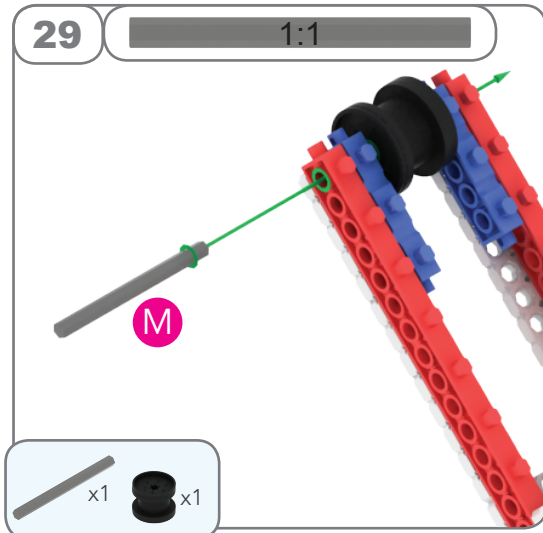


28

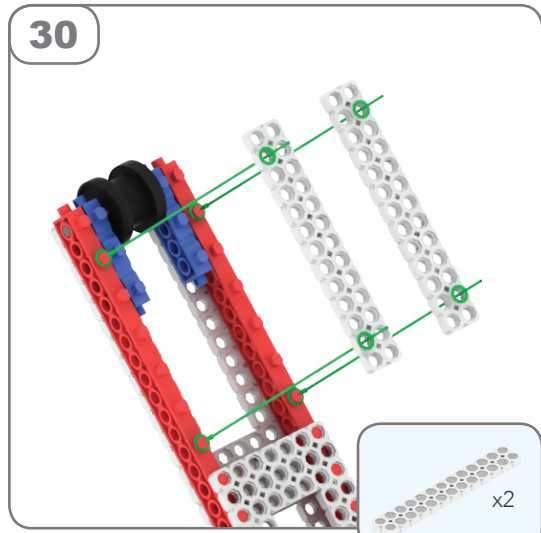


29

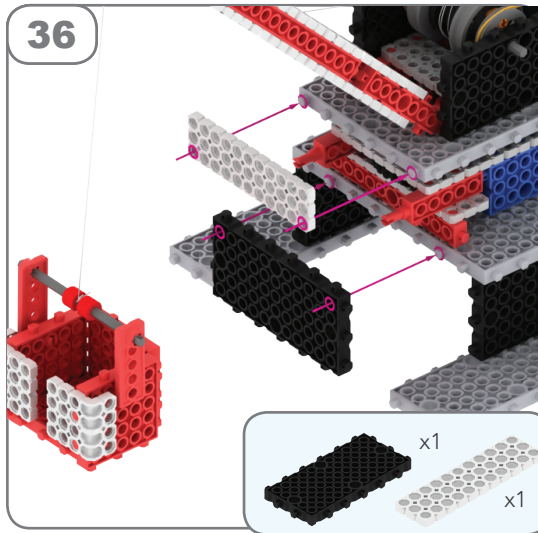
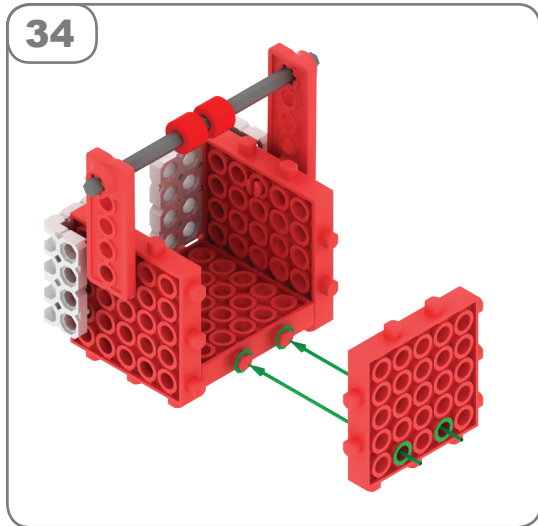
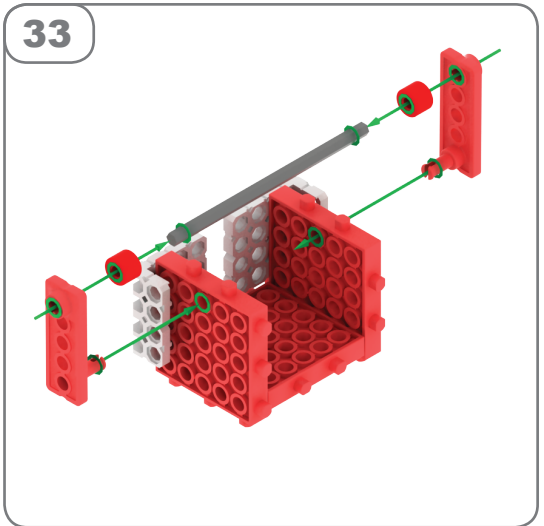
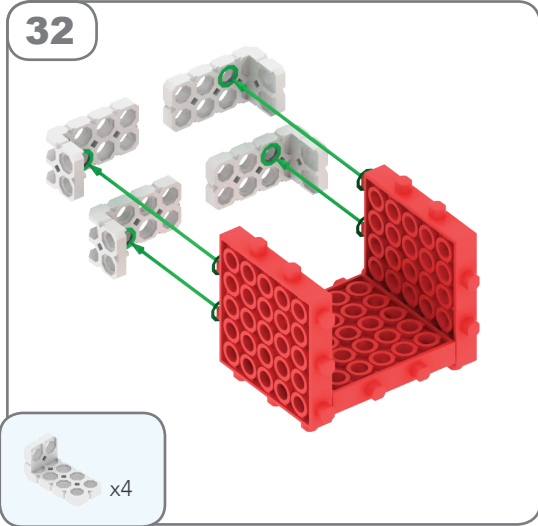
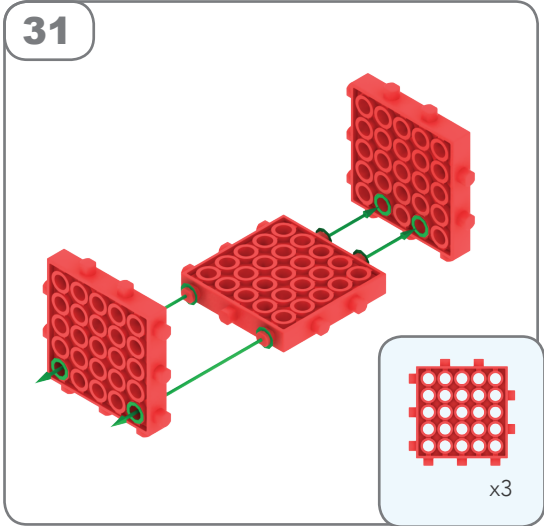
1:1

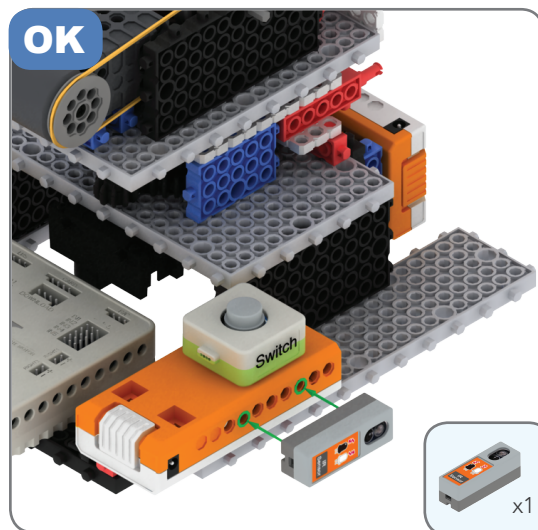
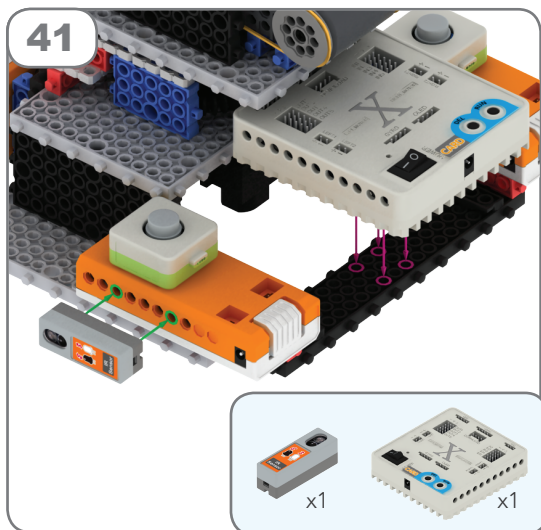
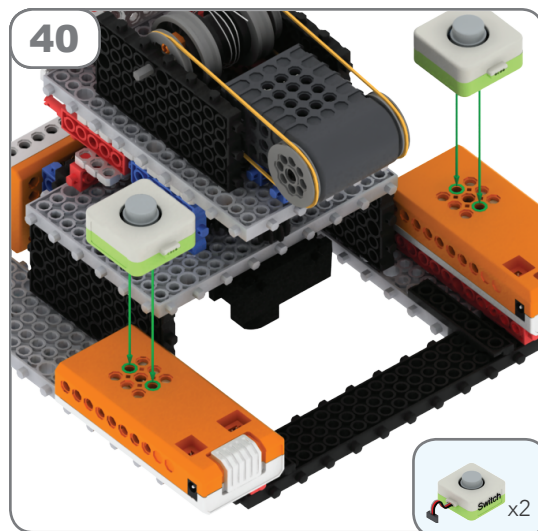
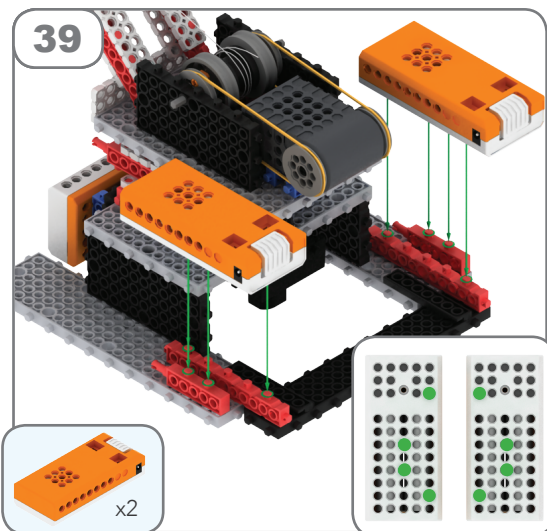
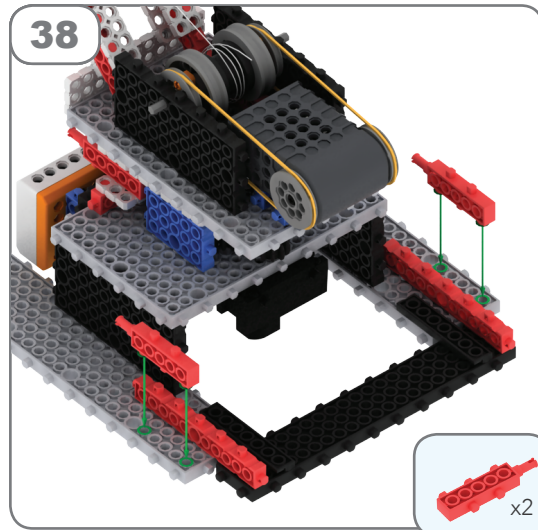
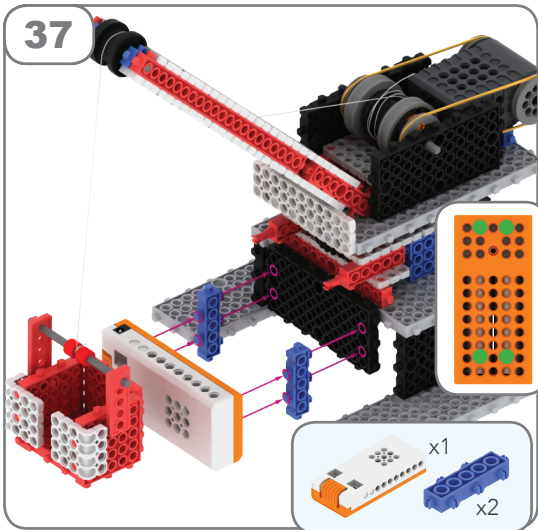


30



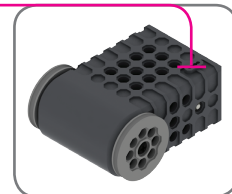
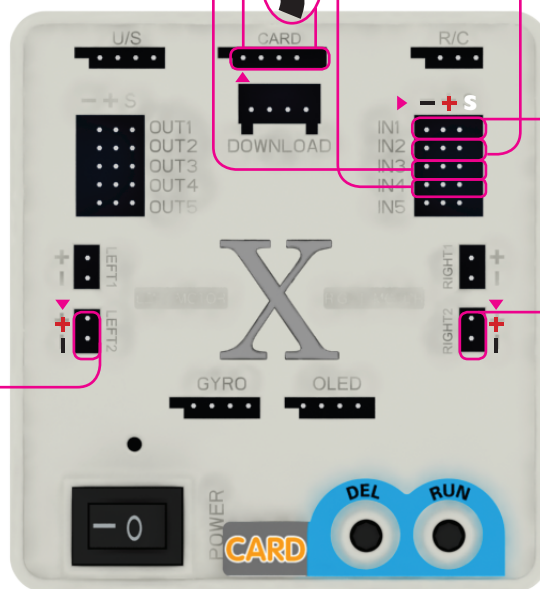
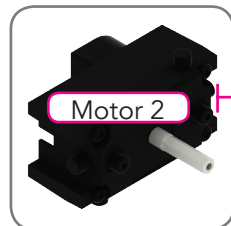
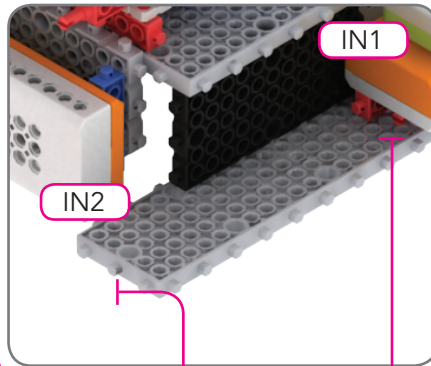
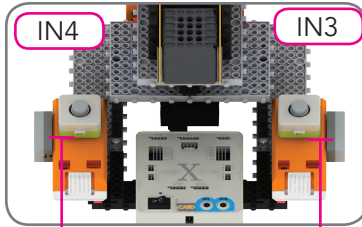






## ¿Cómo hacer la conexión?

Haz que el ▲ se corresponda con el ▲ del conector del cable del lector de tarjetas



Para una descripción más detallada, consulta la sección «Consejos para un buen montaje» del fascículo.

**Practica**



Consulta la sección «Aprende a programar» del fascículo: en ella encontrarás una explicación más detallada y más ejemplos de programación.

- 1.Cycle start (all time)
- 2.IF-IN1
- 3.Left motor 2 counterclockwise rotation
- 4.IF-IN2
- 5.Left motor 2 clockwise rotation
- 6.IF-IN3
- 7.Right motor 2 counterclockwise rotation
- 8.IF-IN4
- 9.Right motor 2 clockwise rotation
- 10.IF-NOT
- 11.Stop
- 12.Cycle end



IF-IN1



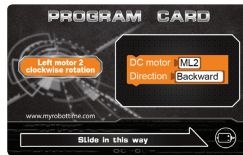
IF-IN2



IF-IN3



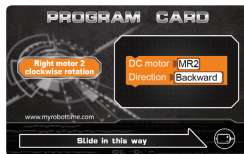
IF-IN4



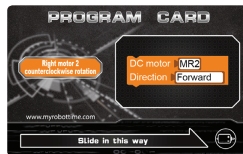
Left motor 2  
counterclockwise rotation



Left motor 2  
clockwise rotation



Right motor 2  
counterclockwise rotation



Right motor 2  
clockwise rotation



IF-NOT



Cycle start  
(all time)



Cycle end



Stop